

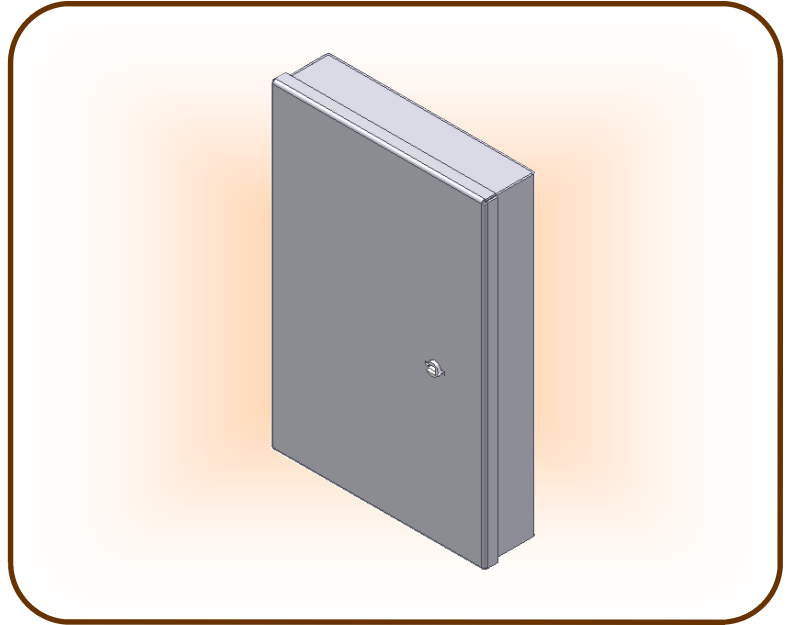
Key Cabinet– Surface Mount

KEY CABINET

JCP Models

Description

J-1-4001	Key Cabinet (shown)
J-1-4002	Key Cabinet w/ BHK Panel
J-1-4003	Key Cabinet w/ Expansion Panel
J-1-4004	Key Cabinet w/ BHK & Expansion Panel
J-1-4005	Key Cabinet w/ Finish Paint
J-1-4006	Key Cabinet w/ BHK Panel & Finish Paint
J-1-4007	Key Cabinet w/ Expansion Panel & Finish Paint
J-1-4008	Key Cabinet w/ BHK, Expansion Panel & Finish Paint



JCP Specifications: Key cabinets are fabricated from 10 gauge HRPO steel and are 16” wide x 24” high x 4-1/8” deep. Six 1/2” diameter holes are provided in the back of the cabinet for the installer to provide and install 3/8” diameter expansion anchors to surface mount the key cabinet to the wall. Three 10 gauge HRPO steel key hangers are welded to the back of the cabinet to provide space to secure approximately 144 mogul or paracentric keys. The door is welded to the cabinet with two 3” x 3” extra heavy duty blank steel hinges. Key cabinets are shipped fully welded and assembled with one shop coat of our standard primer.

Security locks are not provided with the key cabinet and must be purchased separately. JCP will provide a lock mounting preparation if furnished with the template for the lock.

Key cabinets specified to receive finish paint will receive one shop coat of our standard primer and one shop coat of our standard finish paint with a textured finish. Finish paint color will be from our standard finish paint color palette.

The builders hardware key (BHK) panel is fabricated from 14 gauge stainless steel and contains 53 hooks to secure approximately 477 builders hardware keys. The BHK panel is welded to the inside of the door. The stainless steel panel has a random orbital finish.

The expansion panel is fabricated from 10 gauge HRPO steel and has three key hangers welded to the back side of the panel only. The expansion panel is welded to the inside of the cabinet with two 3” x 3” extra heavy duty blank steel hinges to allow access to the keys in the back of the cabinet and provides space to secure approximately 144 mogul or paracentric keys. The expansion panel requires the depth of the key cabinet to be increased to 8” and receives the same primer or finish paint as the key cabinet.

Note: The wall must be flat and true within 1/16” +/- for the proper installation of the key cabinet. Special key cabinet sizes, gauges, or construction may be available on a per project basis for additional cost, please contact a JCP estimator for pricing and availability.

JAILS CORRECTIONAL PRODUCTS A Division of **FABCOR, Inc.**

350 South Ohio Street, P.O. Box 58
Minster, Ohio 45865
www.fabcor.com

Phone: (419) 628- 4428
Fax: (419) 628- 2899
E-mail: jails@fabcor.com

Equipment Assembly

EA-05.01

Revision C

©2003 Fabcor, Inc.