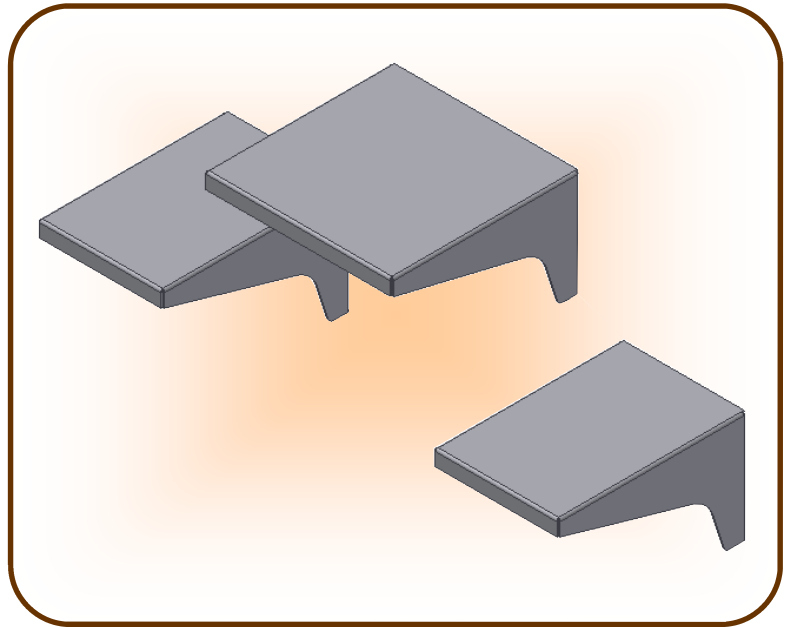


Table and Seat- Wall Mount

TABLE

<u>JCP Models</u>	<u>Description</u>
J-1-3501	Table
J-1-3502	Table w/ Embed
J-1-3503	Table w/ Stainless Steel
J-1-3504	Table w/ Stainless Steel, Embed
J-1-3505	Table w/ Finish Paint
J-1-3506	Table w/ Finish Paint, Embed
J-1-3531	Table w/ (1) Seat
J-1-3532	Table w/ (1) Seat, Embed
J-1-3533	Table w/ (1) Seat, Stainless Steel
J-1-3534	Table w/ (1) Seat, Stain. Steel, Embed
J-1-3535	Table w/ (1) Seat, Finish Paint
J-1-3536	Table w/ (1) Seat, Finish Paint, Embed
J-1-3561	Table w/ (2) Seat (shown)
J-1-3562	Table w/ (2) Seat, Embed
J-1-3563	Table w/ (2) Seat, Stainless Steel
J-1-3564	Table w/ (2) Seat, Stain. Steel, Embed
J-1-3565	Table w/ (2) Seat, Finish Paint
J-1-3566	Table w/ (2) Seat, Finish Paint, Embed



JCP Specifications: Tables are fabricated from one piece of 10 gauge HRPO steel that is fully welded and have a 18" x 18" top. Each support leg is 10-1/2" long and has two 1/2" diameter holes for installation to a wall with security anchors provided by the installer. The table will receive one shop coat of our standard primer. Tables are to be set at 30" above the finished floor.

Each Seat is fabricated from one piece of 10 gauge HRPO steel that is fully welded and have a 12" wide x 18" long top. Each support leg is 10-1/2" long and has two 1/2" diameter holes for installation to a wall with security anchors provided by the installer. The seat will receive one shop coat of our standard primer. Seats are to be set at 18" above the finished floor and 4" from the table.

Where embed is specified, integral anchor straps of the same material as the table or seat that are 4" long welded to the unit. The table or seat unit is embedded in the wall by the installer as one unit. The installer of the embeds will place the embed on the appropriate block course and lay the block in and around the embed straps. The installer will insert a #4 rebar (provided by installer) through each anchor strap and verify that the embed is flat and true. The block wall must be grouted solid for proper anchorage.

Where stainless steel is specified for either a table or seat, the unit will be fabricated from the same gauge stainless steel with the same dimensions. All stainless steel will have a random orbital finish.

Where finish paint is specified for either a table or a seat, the unit will receive one shop coat of our standard primer and one shop coat of our standard finish paint with a textured finish. Finish paint color will be from our standard finish paint color palette.

Walls must be flat and true within 1/16" +/- for the proper installation and use of the table or seat. Special table or seat sizes or configurations may be available on a per project basis for additional cost. Please contact a JCP estimator for pricing and availability.

JAILS CORRECTIONAL PRODUCTS A Division of **FABCOR, Inc.**

350 South Ohio Street, P.O. Box 58
Minster, Ohio 45865
www.fabcor.com

Phone: (419) 628- 4428
Fax: (419) 628- 2899
E-mail: jails@fabcor.com

Equipment Assembly

EA-11.01

Revision C

©2003 Fabcor, Inc.